

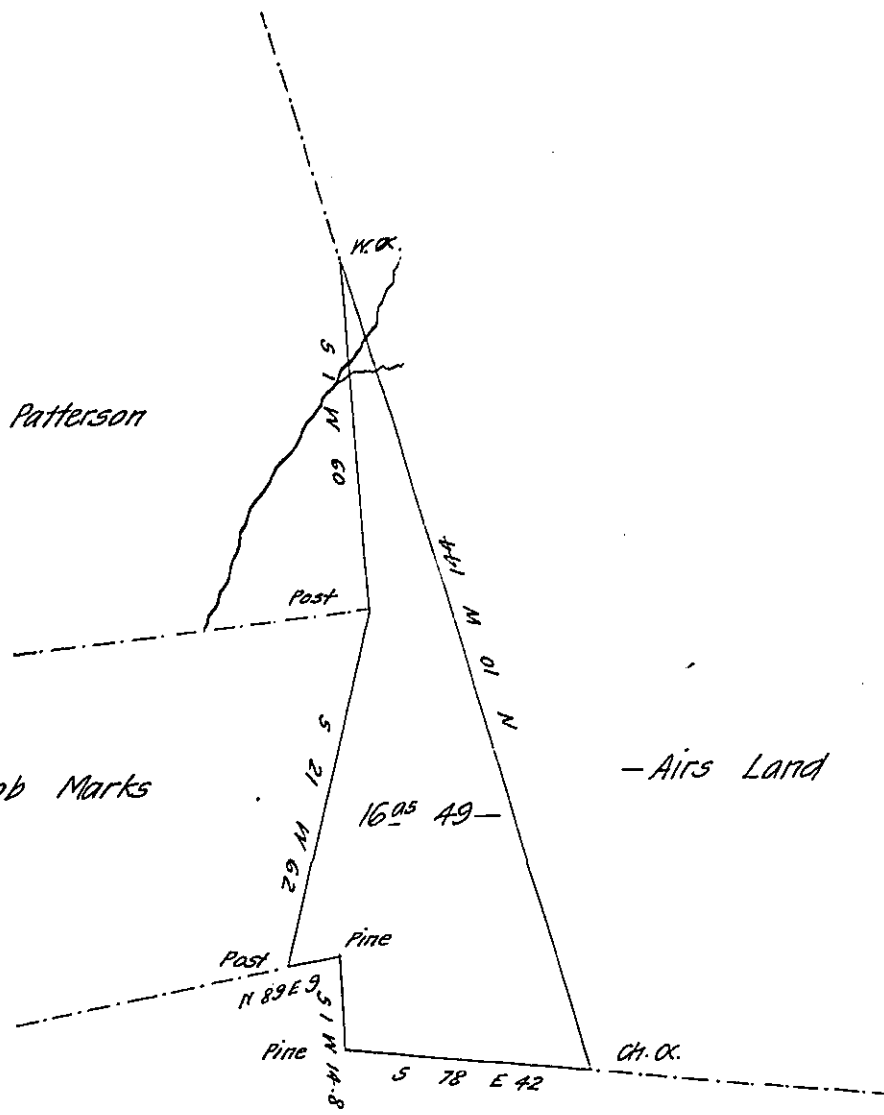
FORM NO 1.

Margaret Patterson

Jacob Marks

-Airs Land

John Ettenger



Draught of sixteen acres and forty nine perches of land with six pr. Cent
 for Roads &c. Situate in Greenw. Township Juniata County surveyed July the 30th 1851
 in pursuance of a Warrant granted to Margaret Patterson dated July the 7th 1851 for
 15 as. Conrad Markle C.S.

To J. Porter Brawley Esq.

Surveyor General of Penn.

IN TESTIMONY that the above is a copy of the original remaining on file in
 the Department of Internal Affairs of Pennsylvania, made
 conformably to an Act of Assembly approved the 16th day of
 February, 1833, I have hereunto set my Hand and caused
 the Seal of said Department to be affixed at Harrisburg,
 this ninth day of February 1908

Henry Howell
 Secretary of Internal Affairs.